

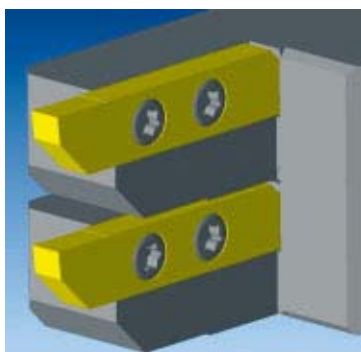


## A POWERFUL TOOL AT THE SERVICE OF THE MODERN BAR-TURNING OPERATOR!

Following the certification of SylvieXpert by Tornos SA earlier this year, the new version of this CAM (computer-assisted manufacturing) software dedicated to bar-turning operators was unveiled with a sneak preview at SIAMS 2006 in Moutier. This article briefly presents its new functional capabilities and also describes a collaborative project involving the CTDI training centre in Tramelan and testimonials from Burri SA and Tectri SA, users of SylvieXpert for the operation of DECO machines.

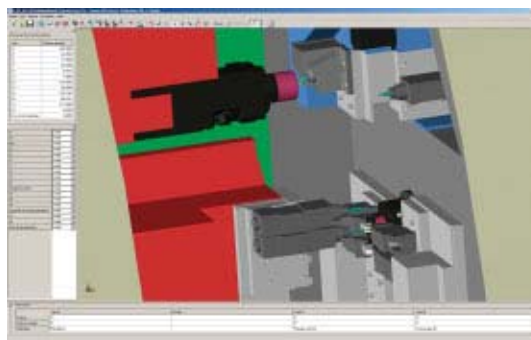


SylvieXpert is an axis-based CAM system used for operating CN bar-turning units. Developed by Jurasoft SA, a company located a stone's throw from Moutier, SylvieXpert is marketed in Switzerland by Jinfo SA. Its main features are its ability to control an unlimited number of axes and channels, as well as realistic, comprehensive simulation of machine functions.



**The new version 2.5 comprises numerous features including:**

- display of component pickup and complementary operations such as retrieval of components
- new types of operation (polygon cutting, thread whirling, mortice cutting etc)
- new control system for chamfering during a turning operation
- new concept for using shape-cutting tools
- enhancement of the library of tool elements.



For more information:  
[www.sylviexpert.ch](http://www.sylviexpert.ch)



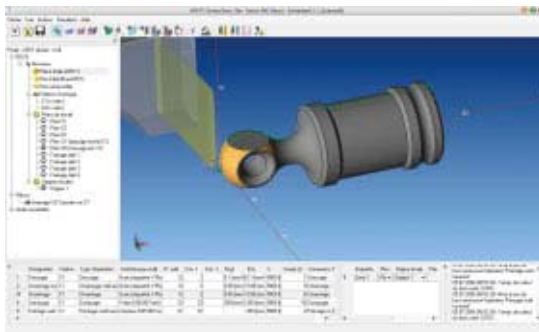
The Technical Training Centre for the Bar-Turning and Shaping Industry (CTDI-CIP), established in 1994, has become an essential complementary service to the traditional training avenues. It was established in Tramelan in the Centre Interrégional de Perfectionnement (CIP). CTDI-CIP offers a wide range of personalised courses to develop expertise and retraining of staff, thereby responding to the demands and growing needs of an industry undergoing continuous change.

For many years, the CTDI-CIP has been offering specialist CAM training courses specialising in milling and, when classes restart, it will be possible to follow courses in CAM aimed at bar-turning operations.

## Technical

To this end, a close collaborative relationship has developed over the last few months with Jurasoft, the company that developed SylvieXpert CAM software.

A fully comprehensive course combining theory and practice will be offered from this August at CTD-CIP.



It will then be possible to test programs devised in CAM on the Tornos Deco 10a and on the Tornos Deco 13a. The number of participants will be limited to 3-4 people. The price for the basic course (3 days) is SFR 1400.-, specialisation (2 days) costs SFR 1100.- and the full 5 days cost SFR 2200.-. Customised courses can be arranged on request.

### The advantages of using SylvieXpert according to the CTD

This software has a different approach to CAM. It has a simple interface capable of managing a large number of complex operations which are more difficult to program without assistance, e.g. an operation centring on the C axis. The programmer works on a 3D model. This approach is not an easy undertaking when machining complex workpieces on multi-channel machines like the DECO 10a or the DECO 13a. The scope for creating ranges of operation models can be of great benefit when designing families of identical components, and it delivers an appreciable time saving.

Finally, a 3D simulation rounds off the software and gives the user a means of checking the program before running it on a machine.



This software can therefore act as a complementary tool, indeed as an indispensable one for programming any workpiece with a high value-added component.

For more information:

[www.ctdt-cip.chBurri](http://www.ctdt-cip.chBurri)

**BURRI**  
DECOLLETAGES ET PIÈCES À FAÇON

Burri SA is a company in the BM Group. Burri places its dynamism and its expertise in the field of bar-turning at the service of its principal markets: automotive, medical, watchmaking and security.

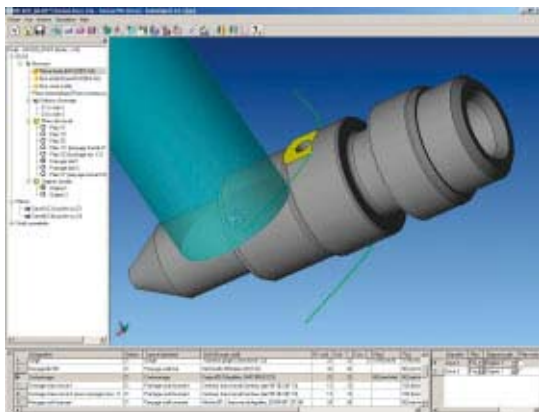
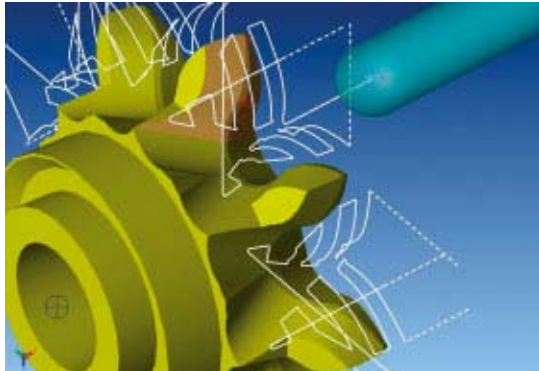


With its 100-strong workforce, Burri SA believes that its future lies in having a perfect command of ever more precise, ever smaller and ever more complex workpieces.

Burri SA has been using SylvieXpert since early 2005.

The advantages of programming CN bar-turning lathes with SylvieXpert can be summarised in three points for Burri SA: flexibility, productivity and capitalisation on expertise. At Burri SA, flexibility is the top priority in its production operations. It is indeed now essential to have the capability to launch very short production runs of components featuring very diverse technologies and to do so in record time. In the following example of a machining operation, the use of a ball miller working in 3D makes it possible to produce this workpiece with a standard tool instead of a custom-made tool, which would entail a delay in the start of production work.

Now that operations combining milling and complex geometries are becoming more frequent occur-



rences, it is very important to be able to deliver the right programs parallel to production operations. With TB-DECO and SylvieXpert, you can now save days that were previously spent on programming tasks. Detailed final adjustment is possible with real 3D simulation based on the precise kinematics of the machine.

For more information:  
[www.bmgroupe.ch](http://www.bmgroupe.ch)



Tectri SA is a specialist in the machining of turned and milled metal and synthetic workpieces. Its work is centred upon high precision and complies with the standards in force in the leading-edge technologies associated with the medical, aeronautic and metrology sectors.

Mr. Fabien Bouduban, Director, answers our questions.

**What types of component do you manufacture using bar-turning equipment ?**

Primarily short production runs of complex geometry

components, which require relatively long machining times, in some cases more than 20 minutes.

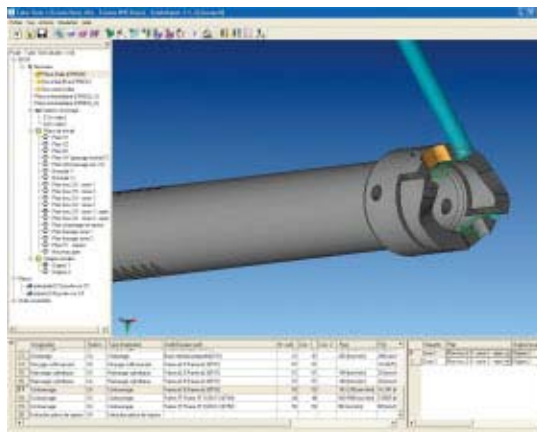
Our range of bar-turning units comprises the Tornos DECO 13a and Tornos DECO 20a. We have expertise in the machining of a large number of materials, from the toughest of metals to the most distortion-prone of synthetic materials.

**What is the biggest technological challenge you face at this time ?**

Our hope at this time is to find a way of rationalising as much as possible the lead time involved in getting a new component to the machining stage. The objective we are hoping to achieve: «the third component used for adjustment meets the standard».

**Why did you choose the SylvieXpert CAM system ?**

We have been working closely with Jinfo SA for the last three years on GOélan CAM software for the operation of our machining centres. After-sales ser-



vice has a very important part to play in computerised applications. We knew that Jinfo was offering new software for bar-turning operations and we discovered SylvieXpert when we visited the Simodec in 2006.

A demonstration at our site then convinced us with its practical approach and its ability to take full account of the distinctive features of bar-turning operations.

For more information:  
[www.tectri.ch](http://www.tectri.ch)