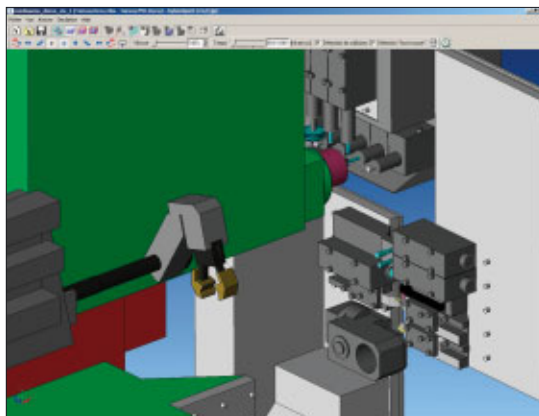


# SylvieXpert – SWISS SOFTWARE DESIGNED FOR AUTOMATIC TURNING MACHINES AND THEIR KINEMATIC FEATURES, TOOLS AND TYPES OF OPERATION

**Today, SylvieXpert has established itself as a software designed for turning machines by accounting for kinematic specific features and programming which is very different from other CNC machines like milling machines, wire erosion process machines or even turning machines. While operating the Tornos automatic turning machine series using the TB-DECO control since 2005, several clients now program the new Tornos Sigma range with SylvieXpert while working in ISO code.**

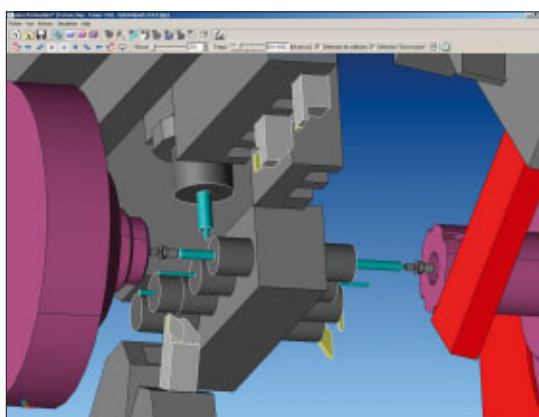
## A customized software for the DECO a-Line and Sigma turning machines

SylvieXpert is edited by Jurasoft SA, a Swiss company close to manufacturers and users of automatic turning machines and digitally operated tooling machines designed for microtechnology, the watch making industry and the medical and dentistry sectors.



Machining simulation on the DECO 20a

Standard software currently available on the market is unsuitable for programming modern turning machines, especially because of the number of simultaneous operations and handling of work-pieces.

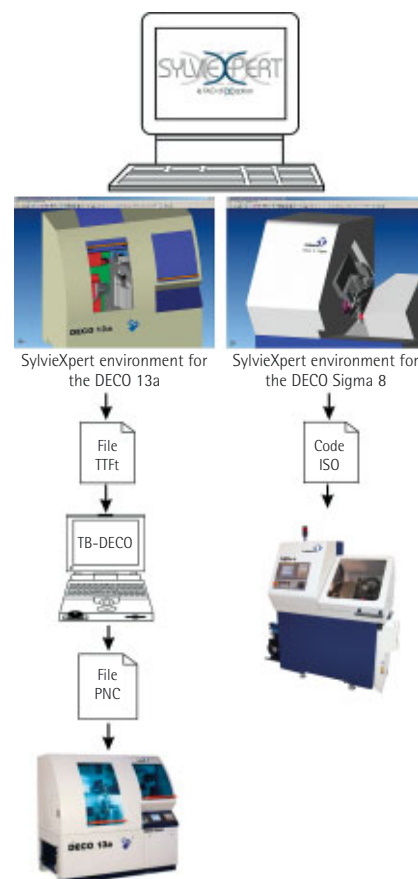


Simultaneous machining on the DECO Sigma 8

With SylvieXpert, the user programs as if he was in front of his machine. Throughout the work process, he remains in his 3D production environment.

In addition to the machine's complete set of kinematics, he has a range of nearly 2000 cutting tools and tool supports at his disposal. Standard Tornos tooling, adapted to each machine, as well as various independently branded tool supports, regularly used by turning machine operators are reproduced in 3D.

Naturally, SylvieXpert also allows in-house tools to be used. The software has been designed to provide a single way of working with whatever type of



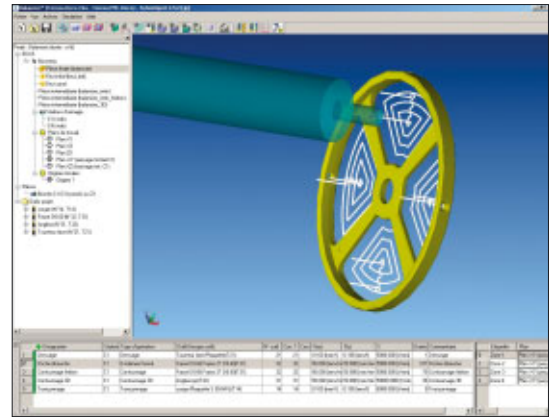
## Technical

machine is being used. ISO, TB-DECO and other proprietary languages are all handled by SylvieXpert, which also perfectly manages synchronizations and restrictions. After operating automatic turning machines with sliding headstocks, SylvieXpert is now capable of operating simple and complex turning machines with fixed headstock.

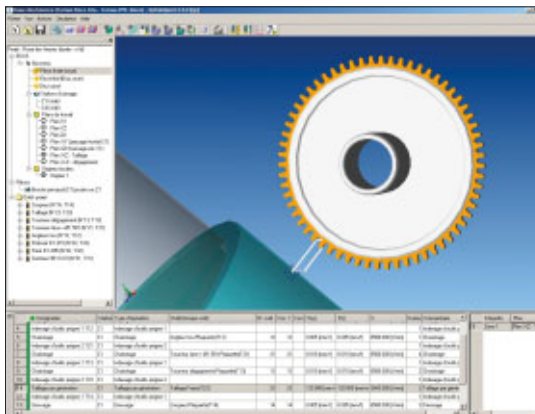
### SylvieXpert and specific types of operations for bar turning

In addition to the particular kinematics for bar turning, the tools and types of operations are equally specific to this type of work. Editor of the software, Jurasoft SA has developed these tailored functions precisely and in collaboration with users. As an example, the system is capable of polygon cutting, mortice cutting, thread whirling and generation trimming.

Other types of operation are also developed like routing, hollowing out holes or shuttle action with several tool correctors.



Machined part at Atokalpa SA in Alle (Switzerland) on a DECO10a

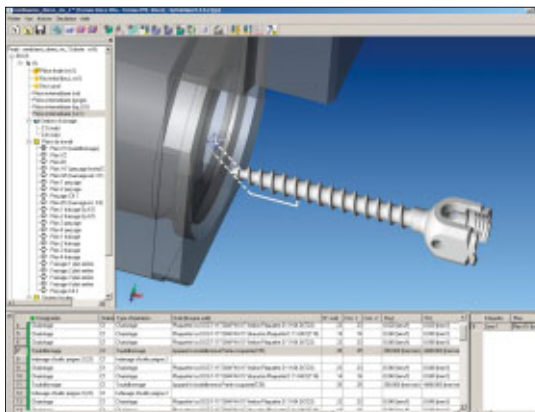


Gear hobbing on the DECO 10a

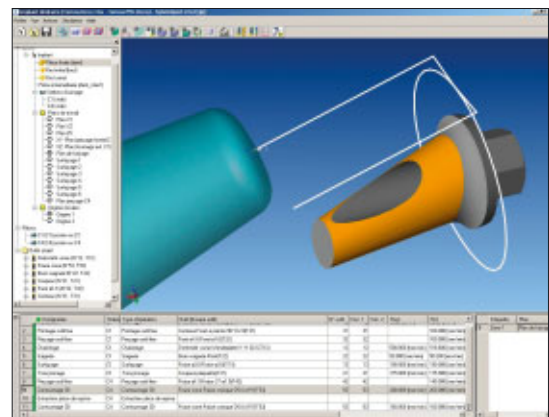
### SylvieXpert – well suited to machining workpieces in 3D on turning machines

Since the commercial launch of SylvieXpert, companies working in the medical and dental sector have been impressed by the performances of this software. Indeed, the complex shapes which are common when programming these workpieces cannot easily be done manually, such as 3D profiling and machining offset surfaces.

These functions are particularly suited to machining parts for the watchmaking industry, the connectivity business and the medical and dental sectors.

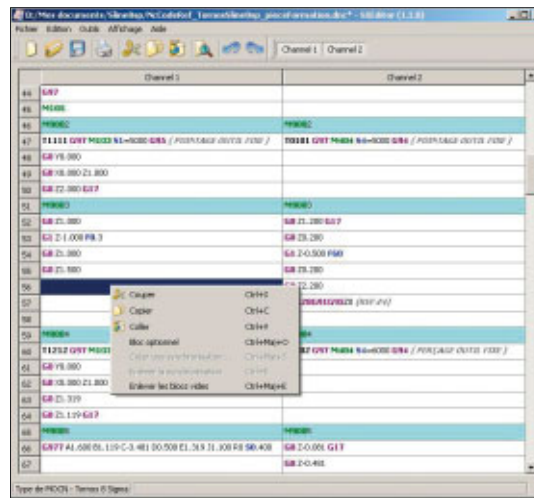


Thread-whirling on a screw in the medical sector with a DECO 20a



3D profiling for implant on DECO 13a

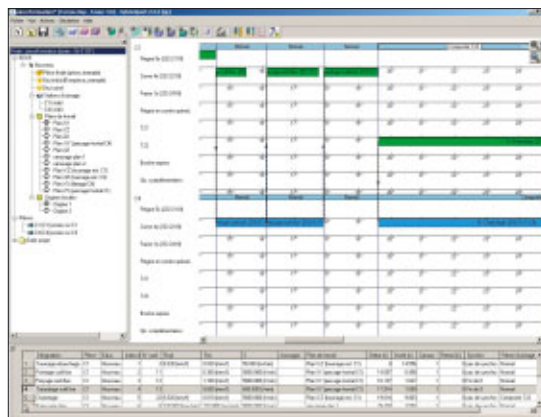
With SylvieXpert, productivity is enhanced when running a small series of simple or complex workpieces. Multiple tools are at the disposal of the programmer in order to rationalize his work for example: model operational lines, complete recovery of tools with their holders and their positions on the machine. It is also possible to recover an existing machining project and apply a new workpiece model.



SX-Editor - the new multichannel editor

### Optimization of the program.

When machining operations are described, simply position the synchronizations on a Gantt diagram to organize simultaneous operations very easily.



Organization of simultaneous operations

This development is based on the same philosophy as SylvieXpert and takes into account the special synchronization features of each turning machine thanks to the customized machine modules. In addition, the next version will offer various new features including a tool tracking editor which will enable operators to customize their machining operations.

### For more information

[www.sylvieexpert.com](http://www.sylvieexpert.com)  
[info@jurasoft.ch](mailto:info@jurasoft.ch)

### Forthcoming exhibition

CH - mediSIAMS and BIMO, 25-28 April 2007  
 in Moutier and Delémont

### New modules

The latest version of SylvieXpert is available in four language versions (F, D, E, I) with the ability to work in the metric or imperial system. To respond to the demand from SylvieXpert users, two new models have been launched since beginning of 2007. The first of these is an easy to learn volumetric and surface-based CAD 3D concept module capable of very high standards of precision and performance. This module enables the bar turning specialist to edit or modify the geometry to be machined. Once these geometric modifications have been made, the model can be updated in the machining project. The second module, the SX-Editor, is an ISO code editor with multichannel display and program management functions.



Jurasoft SA  
 Rte de Coeuve 2  
 CH - 2900 Porrentruy  
 Tel. +41 32 465 50 50  
 Fax. +41 32 465 50 59